

# Fall 2019 Sample Product Development

Producer: Sasha

Sample Request Sent: 11/13/18

Sample #: FL19 - S3

Delivery Due Date: January 2nd - 7th, 2019

## Details:

Square Scarf

Same pattern / weave as SKU #32071

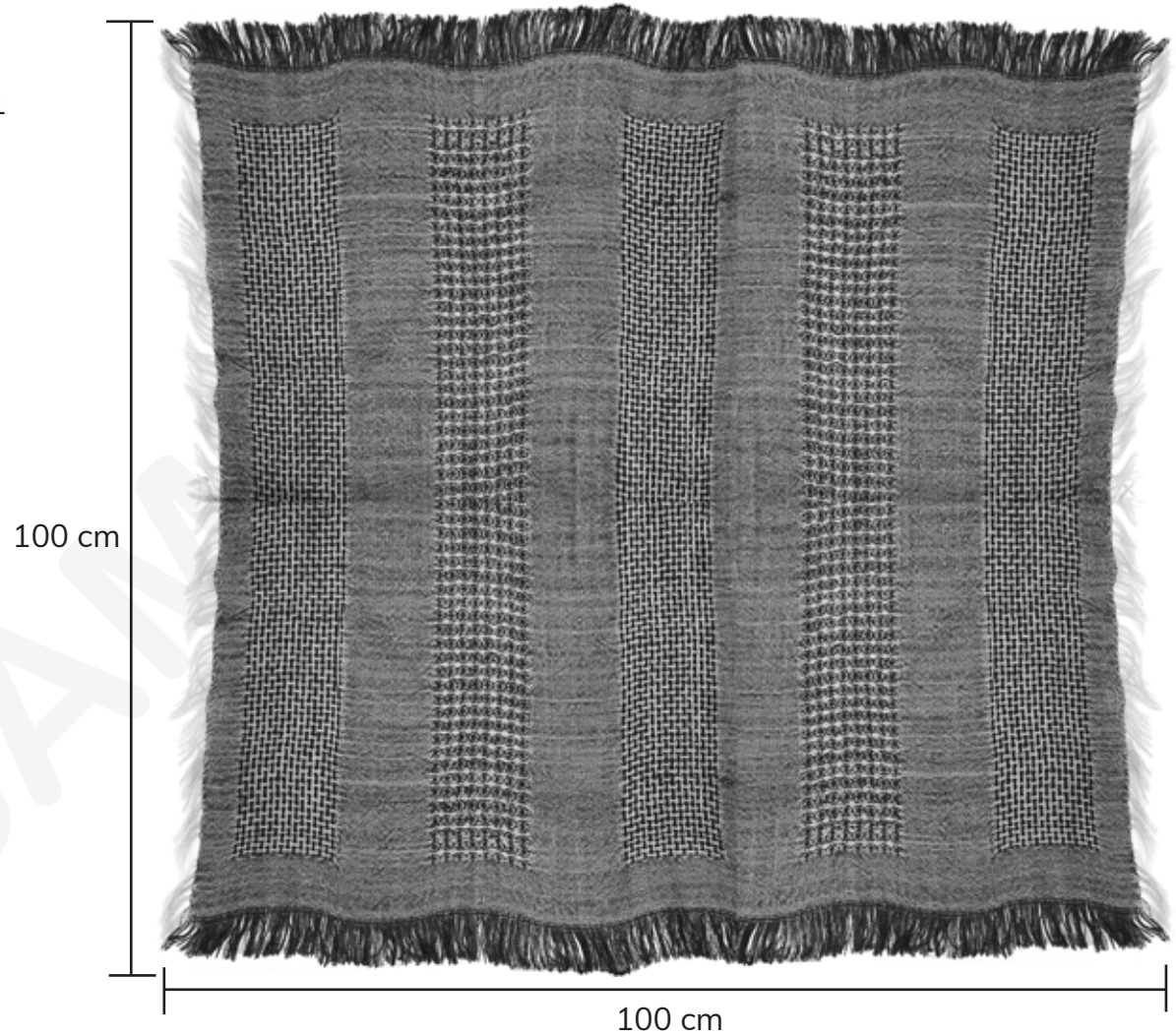
Dimensions: 100 cm L x 100 cm W

Colors: Black & White

## Reference Images:



SKU #32071



# Fall 2019 Sample Product Development

Producer: Sasha

Sample Request Sent: 11/13/18

Sample #: FL19 - S9

Delivery Due Date: January 2nd - 7th, 2019

## Details:

Burgundy Stripe Ruana

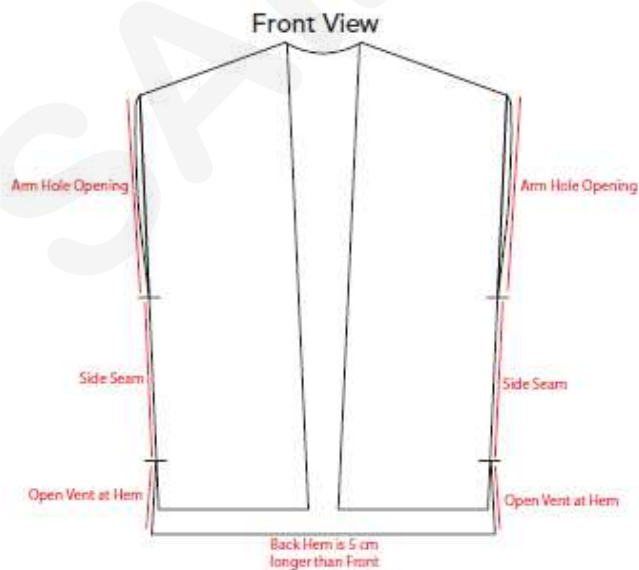
### Dimensions:

- Center back to bottom hem length - 78 cm
- Center back to front hem - 75 cm
- Underarm side seam back width - 85 cm L
- Arm hole opening - 30 cm L

Fabric: See Sasha Sample below

Fringe hem on bottom

## Reference Images:



Front View



Back View



Fall 2019 Sample Product Development

Producer: Sasha

Sample Request Sent: 11/13/18

Sample #: FL19 - S6

Delivery Due Date: January 2nd - 7th, 2019

---

Details:

Crewelwork Tote Bag

Same size / shape / interior as SKU #32365

Antique Brass Hardware

See crewel design shown to right

Reference Images:



SKU #32365



Sasha Sample for  
Crewel Reference



## Fall 2019 Sample Product Development

Producer: Sasha

Sample Request Sent: 11/15/18

Sample #: FL19 - S14

Delivery Due Date: January 2nd - 7th, 2019

---

### Details:

Teal Floral Watercolor Handpainted Scarf

Same size / shape as SKU #35523

Same material / fringe length as SKU #35523

Same patterns and designs but with teal background instead of purple

### Reference Images:



SKU #35523

